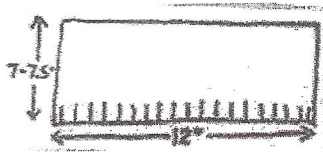


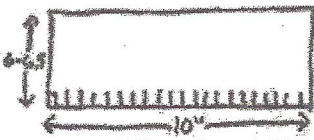
Care Wear Patterns: Knit

Basic Knit Hat

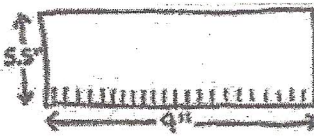
Use: 4 ply washable yarn and size 6 needles.* Cast on the appropriate number of stitches for the size you want to knit. Rib in k1, p1 for 1". In stockinette, knit to the size needed.

**Child-Size: Cast on 74 stitches**

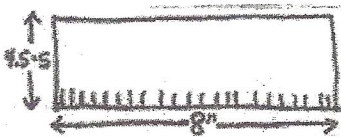
1" ribbing (k1, p1)
6" to 6½" stockinette
Total length = 7" to 7½"

**Full Term: Cast on 66 stitches**

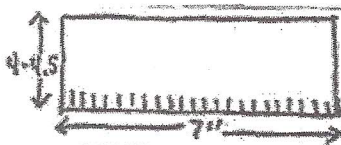
1" ribbing (k1, p1)
5" to 5½" stockinette
Total length = 6" to 6½"

**X-Large Preemie: Cast on 58 stitches**

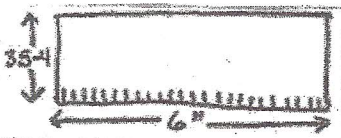
1" ribbing (k1, p1)
4½" stockinette
Total length = 5½"

**Large Preemie: Cast on 50 stitches**

1" ribbing (k1, p1)
3½" to 4" stockinette
Total length = 4½" to 5"

**Medium Preemie: Cast on 44 stitches**

1" ribbing (k1, p1)
3" to 3½" stockinette
Total length = 4" to 4½"

**Small Preemie: Cast on 40 stitches**

1" ribbing (k1, p1)
2½" to 3" stockinette
Total length = 3½" to 4"

**X-Small Preemie: Cast on 36 stitches**

1" ribbing (k1, p1)
2½" stockinette
Total length = 3½"

* For small and x-small preemies use 3-ply yarn and smaller needles (4 or 5 size). Cast on a larger number of stitches for the same finished size.

After knitting the piece to the approximate dimensions shown, draw all stitches together tightly at the top by weaving yarn through all the stitches on the needle. Knot securely. Weave together the seam using yarn.
Optional: Make a pom-pom or bow for the top.

Notes:

1. You may knit the entire hat in ribbing (k1, p1 or k2, p2) stitch.
2. You may substitute small needles, baby yarn, or sport yarn. Simply knit to the dimensions shown for each size. For example, 7" x 4"-4½" for medium preemie.
3. You may knit a rectangle or within one inch from the top, begin to decrease stitches by knitting two stitches together (k2tog) every three stitches in the remaining rows (k3, k2tog, rep).
4. Because there is a great deal of variation in the sizes of the babies in intensive care, hats do not have to *exactly* match the dimensions given. The dimensions that are given represent a range of sizes that can be used.
5. Cast on loosely. Maximum stretch is preferred.
6. Use double pointed needles to omit the seam, if you wish.